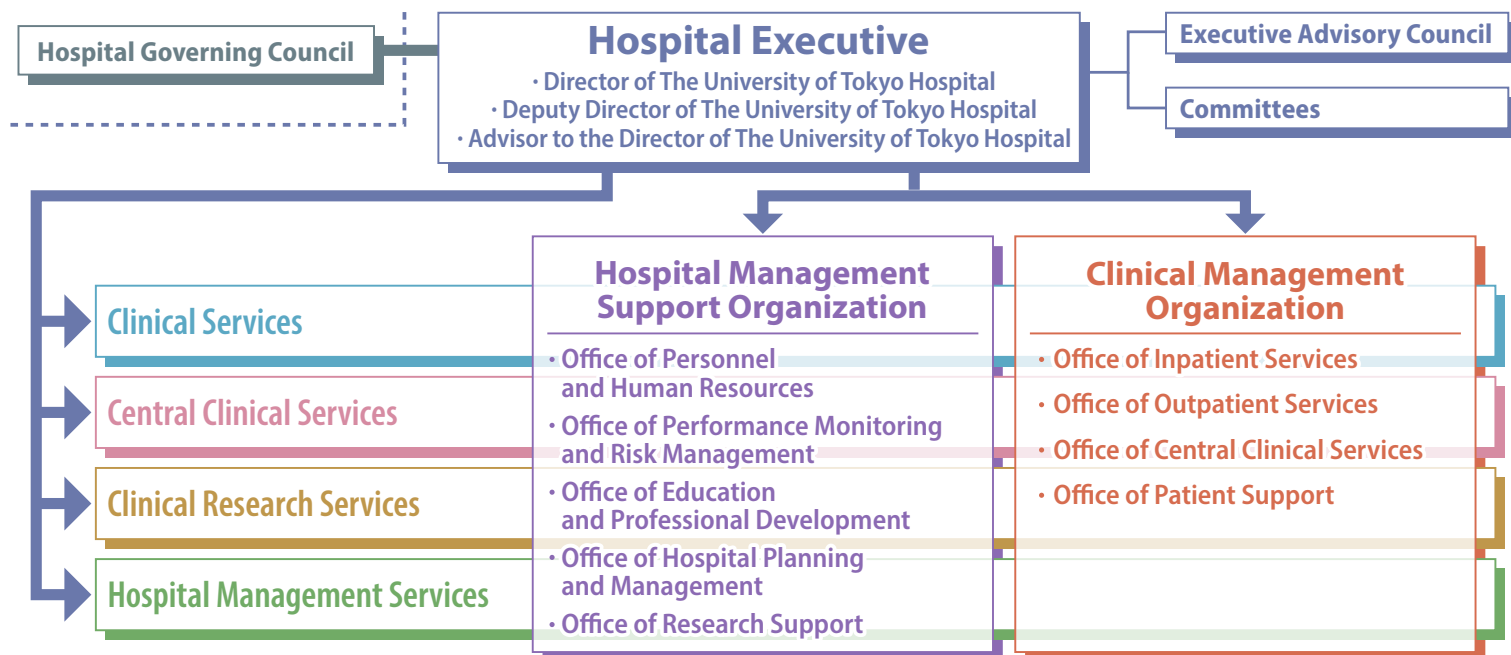


# Organizational Chart of the University of Tokyo Hospital (as of April 1, 2025)



## Clinical Services

### Department of Internal Medicine

- General Internal Medicine
- Cardiovascular Medicine
- Respiratory Medicine
- Gastroenterology
- Nephrology and Endocrinology
- Diabetes and Metabolic Diseases
- Hematology and Oncology
- Allergy and Rheumatology
- Infectious Diseases
- Neurology
- Geriatric Medicine
- Psychosomatic Medicine

### Department of Surgery

- General Surgery
- Stomach and Esophageal Surgery
- Colon and Rectal Surgery
- Hepato-Biliary-Pancreatic Surgery

- Vascular Surgery
- Breast and Endocrine Surgery
- Artificial Organ and Transplantation Surgery
- Cardiovascular Surgery
- Thoracic Surgery
- Neurosurgery
- Anesthesiology and Pain Relief Center
- Urology and Andrology
- Gynecologic Surgery

### Department of Sensory and Motor System Medicine

- Dermatology
- Ophthalmology
- Orthopaedic Surgery and Spinal Surgery
- Otolaryngology and Head and Neck Surgery
- Rehabilitation Medicine
- Plastic, Reconstructive and Aesthetic Surgery
- Oral-Maxillofacial Surgery and Orthodontics

### Department of Pediatrics, Perinatal and Women's Medicine

- Pediatrics
- Pediatric Surgery
- Obstetrics and Gynecology

### Department of Neuropsychiatry

- Neuropsychiatry

### Department of Radiology

- Radiology

### Department of Emergency and Critical Care Medicine

- Emergency and Critical Care Medicine

### Department of Medical Oncology

- Clinical Oncology

### Department of Cross-Sectional Services

- Advanced Medical Center for Heart Failure
- Center for Cardiac Arrhythmias and Electrophysiology

- Marfan Syndrome Center
- Epilepsy Center
- Dementia Center
- Scleroderma Center
- Lupus Center
- Osteoporosis Center
- Center for Female Pelvic Medicine and Reconstructive Surgery
- Spine Center
- Center for hemophilic arthropathy
- Department of Clinical Genomics
- Department of Child Psychiatry
- Children, AYA and Family Centered Mental Care Center
- Department of Pain and Palliative Medicine

## Central Clinical Services

- Department of Pharmacy
- Nursing Department
- Department of Clinical Laboratory
- Department of Blood Transfusion
- Department of Pathology
- Department of Infection Control and Prevention
- Radiology Center
- Rehabilitation Center
- Surgical Center
- Central Supply Service
- Department of Clinical Engineering

- Department of Endoscopy and Endoscopic Surgery
- Department of Hemodialysis and Apheresis
- Critical Care and Emergency Medical Center/ER
- Department of Intensive Care Unit
- Department of Pediatric and Neonatal Intensive Care Unit
- Perinatal Center
- Children's Medical Center
- Department of Outpatient Chemotherapy Unit
- Cancer Center
- Immune-Mediated Diseases Therapy Center

- Organ Transplantation Center
- Tissue Bank
- Department of Corneal Transplantation
- Department of Cell Therapy and Transplantation Medicine
- Admission and Discharge Center
- Perioperative Assessment and Care Center
- Clinical Nutrition Center
- Swallowing Center
- International Medical Center
- Center for Epidemiology and Preventive Medicine

- Center for International Preventive Medicine
- Cancer Board
- Vascular Board
- Hip Fracture Board
- Palliative Care Consultation Team
- Nutrition Support Team
- Medical Community Network and Discharge Supporting Center
- Cancer Resource Center
- Patient Relations and Clinical Ethics Center

## Clinical Research Services

- Clinical Research Promotion Center
- 22nd Century Medical and Research Center
- Department of Tissue Engineering

- Cooperative Unit of Medicine and Engineering Research
- Translational Research Center
- Genomic Research Support Center

- Unit for Early and Exploratory Clinical Development
- BioResource Center
- Center for Brain Imaging in Health and Diseases

## Hospital Management Services

- Medical Safety Management Center
- Infection Control Center
- Office of Performance Monitoring
- Department of Highly Advanced Novel Medical Technologies Evaluation
- Department of Unapproved New Drugs and Medical Devices Evaluation
- Professional Development Center
- Clinical Simulation Center
- Hospitality Center

- Department of Clinical Research Governance
- Department of Healthcare Information Management
- Department of Medical Record Management
- University Hospital Medical Information Network Center
- Database Center of the National University Hospitals
- Labor Safety and Health Management Office
- Staff Wellness Consulting Office

- Radiation Safety Control Office
- Office of Medical Clerical Support for Physicians
- Medical Devices Management Center
- Department of Disaster Medical Management
- Legal and Compliance Office
- Center for Liaison and Public Relations
- Administration Department
- General Affairs Division
- Human Resources and Labor Management Division

- Accounting, Procurement and Facility Management Division
- Financial Strategy Management Division
- Research Promotion Division
- Hospital and Patient Services Management Division
- Medical Accounting Division