

# 東京大学医学部附属病院 機構図 (2021年6月1日)



The University of Tokyo Hospital  
**Organization Chart** (as of June 1, 2021)

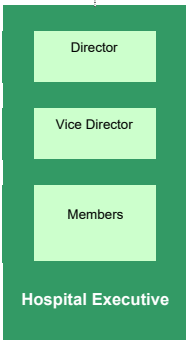
**Organization of Clinical Management Support**

- Department of Personnel Administration and Human Resource Management
- Medical Specialists Training Center
- Medical Support Center
- Department of Performance Monitoring and Risk Management
- Office of Performance Monitoring
- Medical Safety Management Center
- Infection Control Center
- Department of Highly Advanced Novel Medical Technologies Evaluation
- Department of Unapproved New Drugs and Medical Devices Evaluation
- Department of Education and Staff Development
- General Education Center
- Clinical Simulation Center
- Hospitality Center
- Department of Hospital Planning and Management
- Department of Research Support
- Department of Clinical Research Governance

**Organization of Clinical Management**

- Inpatient Services Administration
  - Admission and Discharge Center
  - Cancer Board
- Outpatient Services Administration
- Central Clinical Services Administration
  - Advanced Medical Center for Heart Failure
  - Marfan Syndrome Center
  - Vascular Board
  - Perioperative Assessment Center
  - Swallowing Center
  - Epilepsy Center
  - Immune-Mediated Diseases Therapy Center
- SSC Center
- Osteoporosis Center
- Center for Female Pelvic Medicine and Reconstructive Surgery
- Spine Center
- Hip Fracture Board
- Palliative Care Consultation Team
- Nutrition Support Team
- Division of patient support services
  - Medical Community Network and Discharge Supporting Center
  - Cancer Resource Center
  - Patient Relations and Clinical Ethics Center

**Hospital Management Council**



**Clinical Division 7 divisions and 38 departments**

● <b>Division of Internal Medicine</b>	Vascular Surgery	Plastic, Reconstructive and Aesthetic Surgery
General Internal Medicine	Breast and Endocrine Surgery	Oral-Maxillofacial Surgery and Orthodontics
Cardiovascular Medicine	Artificial Organ and Transplantation Surgery	◇ Cleft Lip and Palate Center
Respiratory Medicine	Cardiovascular Surgery	● <b>Division of Pediatrics, Perinatal and Women's Medicine</b>
Gastroenterology	Thoracic Surgery	Pediatrics
Nephrology and Endocrinology	Neurosurgery	Pediatric Surgery
Diabetes and Metabolic Diseases	Anesthesiology and Pain Relief Center	Obstetrics and Gynecology
Hematology and Oncology	Urology and Andrology	● <b>Division of Neuropsychiatry</b>
Allergy and Rheumatology	Gynecologic Surgery	Neuropsychiatry
Infectious Diseases	● <b>Division of Sensory and Motor System Medicine</b>	◇ Recovery Center
Neurology	Dermatology	◇ Center for AYA with Schizophrenia
Geriatric Medicine	◇ Psoriasis Center	● <b>Division of Radiology</b>
Psychosomatic Medicine	Ophthalmology	Radiology
● <b>Division of Surgery</b>	Orthopaedic Surgery and Spinal Surgery	● <b>Division of Acute Medicine</b>
General Surgery	◇ Center for Joint Arthroplasty	Acute Medicine
Stomach and Esophageal Surgery	Otolaryngology and Head and Neck Surgery	
Colon and Rectal Surgery	◇ Center for Cochlear Implant and Artificial Auditory Device	
Hepatobiliary and Pancreatic Surgery	Rehabilitation Medicine	

**Central Clinical Facilities 41 departments**

- Pharmaceutical Department
- Nursing Department
- Administration Department
  - General Affairs Group
  - Labor and Personnel Group
  - Procurement and Facility Management Group
  - Management Strategy Group
  - Research Support Group
  - Medical Management Group
  - Medical Accounting Group
- Legal and Compliance Office
- Department of Clinical Laboratory
- Surgical Center
- Radiology Center
- Department of Blood Transfusion
- Perinatal Center
- Rehabilitation Center
- Department of Medical Engineering
- Central Supply Service
- Intensive Care Unit
- Pathology
- Department of Corneal Transplantation
- Department of Cell Therapy and Transplantation Medicine
- Department of Endoscopy and Endoscopic Surgery
- Department of Hemodialysis and Apheresis
- Infection Control and Prevention Service
- Department of Healthcare Information Management
- University Hospital Medical Information Network Center
- Organ Transplantation Center
- Labor Safety and Health Management Office
- Staff Wellness Consulting Room
- Child Psychiatry
- Tissue Bank
- Center for Epidemiology and Preventive Medicine
- Center for International Preventive Medicine
- Center for Liaison and Public Relations
- Database Center of the National University Hospitals
- Department of Chemotherapy
- Department of Medical Record Management
- Critical Care and Emergency Medical Center/Emergency Room
- Department of Pain and Palliative Medicine
- Children's Medical Center
- Department of Disaster Medical Management
- International Medical Center
- Clinical Nutrition Center
- Department of Pediatric and Neonatal Intensive Care
- Department of Clinical Genomics
- BioResource Center

**Clinical Research Division 7 departments**

- Clinical Research Promotion Center
- 22nd Century Medical and Research Center
- Department of Tissue Engineering
- Translational Research Center
- Genomic Research Support Center
- Unit for Early and Exploratory Clinical Development